



# The BIG Picture

- Women currently hold **40%** of the Global Wealth
- By 2030 - **\$59 trillion** will be passed on from baby boomers.
- Women will inherit **70 %** of the Great Wealth Transfer.
- Women will possess **two-thirds** of the United States wealth by 2030.



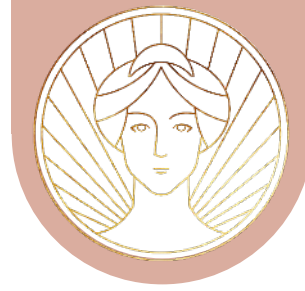
# The BIG Picture



And yet the state of global female leadership is still inadequate:

- 7.4% of female CEOs in Fortune 500
- 10% of female Leaders of Countries
- Female Board Members
  - 22% (USA)
  - 6% (Mexico)



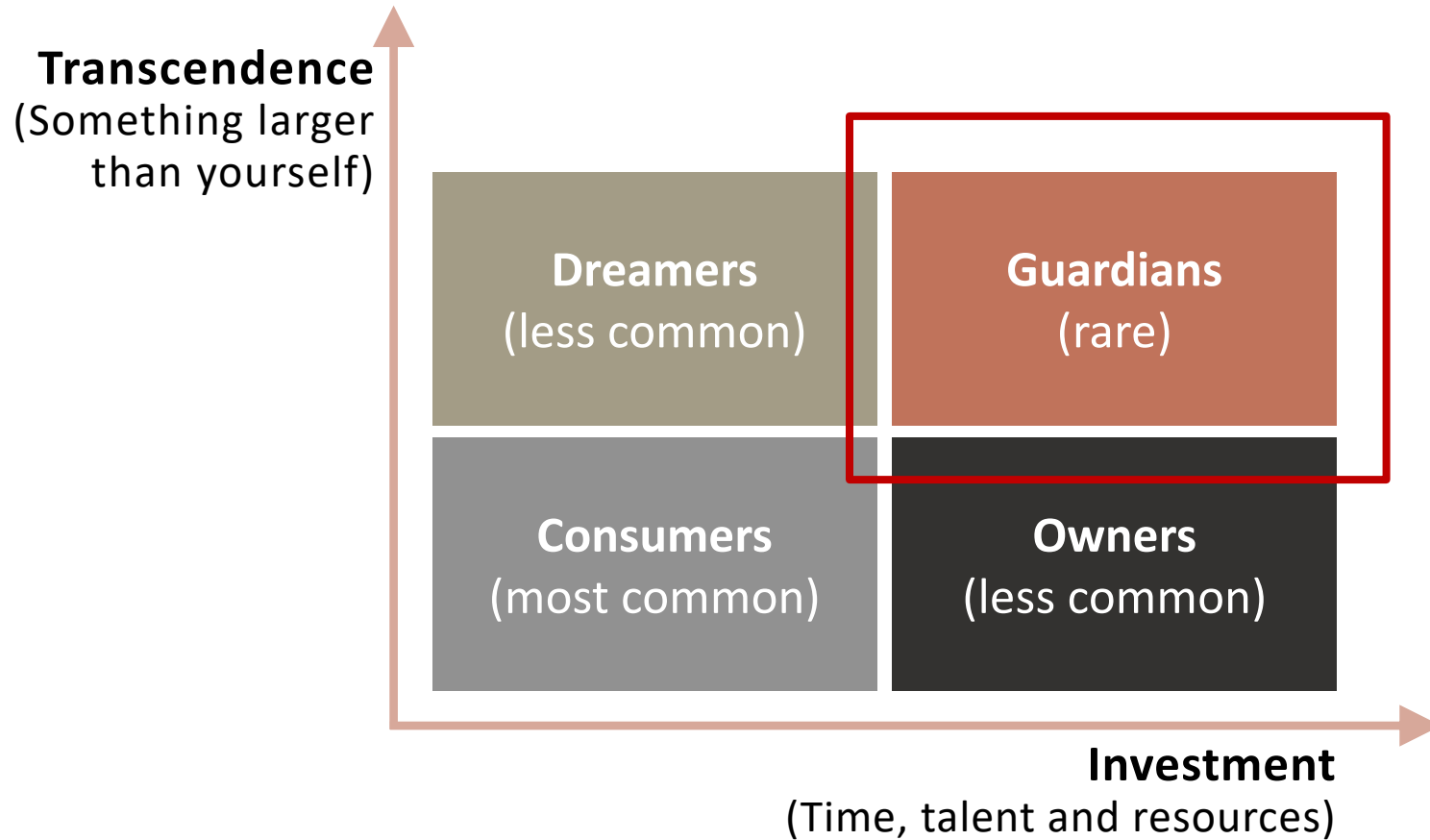
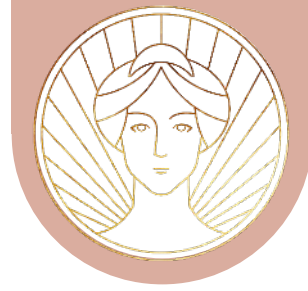


“ Women belong in all places where decisions are being made.

”

–Ruth Bader Ginsburg

# The four possible behavior towards wealth



The world needs responsible heirs with the will, purpose, and determination to contribute.

# Possible behavior toward wealth: **Guardians**



**Investment:** Committed  
**Focus:** External  
**Timing:** Present and future  
**Impact:** Profound and long lasting

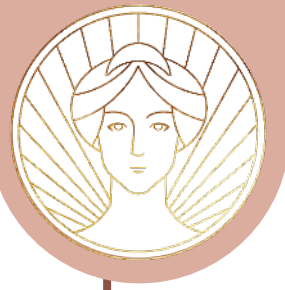
**Motivation:** Purpose  
**Perspective:** Have received someone else's trust  
**Population share:** Rare

**Transcendence**  
(Something larger than yourself)

**Guardians**  
(rare)

**Investment**  
(Time, talent and resources)



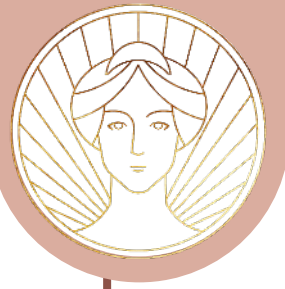


# The Challenges

With wealth comes  
privilege,  
responsibility, and  
sometimes fear.

You may have felt:

- Isolated by the **family's silence** around wealth
- Unsure about how to make the best decisions for **your children**, without money getting in the way
- Worried about how to **leave an impact** personally, when the family's presence looms so large



# And what you want is to:

- Design the **legacy** you want to leave
- Have a greater **voice** and an **impact**
- Find a diversity of resources, ideas and a community of **people who get you**
- Elevate your conversations regarding family wealth



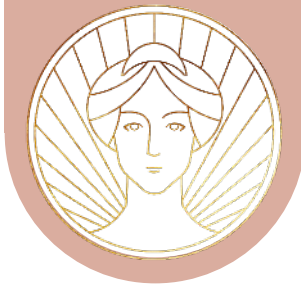
# But you don't know where to turn.

- You've tried family office and financial institution roundtables, and other forums but there's **no meaningful connection**.
- You're missing the family and feminine component.
- You're ready for **real talk** but haven't found a place to open up and find trusted connections, but also **deep personal relationships**.



# The World Wide Women Council

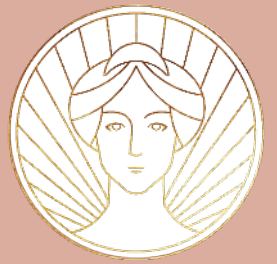
---



A community that allows you to reach your true potential and create meaningful impact.

- Peer to peer guidance
- A global perspective
- Community, accountability, support
- Experience deep belonging
- Crowdsourced feedback & resources
- Share your wins and challenges
- Online community

**These are YOUR people**



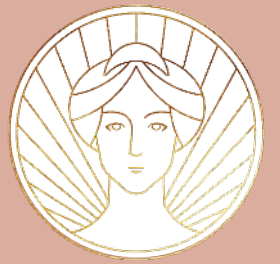
# Our Conversations

- Raising purpose driven children
- Navigating family dynamics
- Self-advocacy
- Creating an action plan for agency
- Stepping into leadership
- Unequal wealth
- Purpose and contribution



# The W3 Format

- A two and a half-hour monthly virtual meeting + 30 min virtual happy hour
  - No more than 10 women
  - 2 facilitators per session
  - By invitation only
  - Virtual community
  - One on one support
  - Reading materials and resources
- 



## Investment

\$950 month (minimum 6-month commitment)

# Testimonials



“ *There is nothing more powerful than a network of women invested in lifting other women.*

*Women allow one other to be their **authentic selves**.*

*We speak hard truths, but with compassion.*

”



# Testimonials



*Women who have the courage to make positive changes in their lives.*

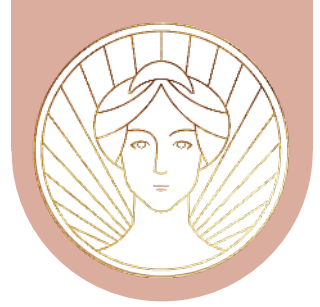
*Tools to uncover my blind spots and overcome obstacles to personal and professional growth.*

*Many of my own obstacles were old family dynamics that I unconsciously felt a loyalty to.*

***The courage to follow my own path** and the tools to deal with my fears and limitations, while remaining a loving and committed member of my family.*



# Testimonials



“ The Council has given me **increased confidence** in my decision making, my value, advocating for my value, presenting and advocating for my ideas, and increased confidence in my ability.

”

# Testimonials

“

*We are very often **too close to our own issues to see them clearly**, and this extraordinary women's peer advisory group is so helpful not only in solving problems, but in identifying the underlying issues we didn't even realize existed.*

”







You were born to your family and wealth  
for a higher reason.

**You are a force.**

**Who are you going to help elevate their seat  
at the table?**



*We believe there is a version of you that  
you haven't met.  
... Join us and meet 'her'.*

#### Wellth Works

64 Northwood Dr, Rochester, New York, 14612

☎ + 1 (202) 780-9107

✉ [info@wellth-works.com](mailto:info@wellth-works.com)

🌐 [wellth-works.com](http://wellth-works.com)

#### Perpetum Family Office

530 B Street, Suite 1870 | San Diego, CA 92101

☎ + 1 (619) 255 9560 ext. 102

✉ [contact@perpetumconsulting.com](mailto:contact@perpetumconsulting.com)

🌐 [perpetumconsulting.com](http://perpetumconsulting.com)